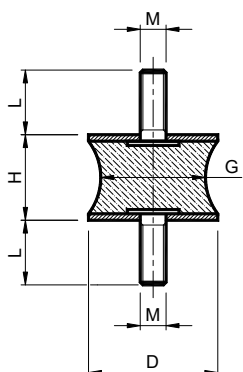




Waisted Bobbins: rubber / steel – Type: **AT** / *Antivibrante Sgolato: gomma / metallo* – Tipo: **AT**



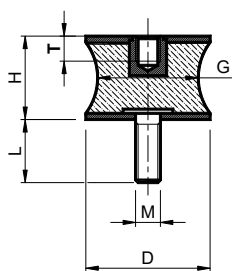
 Antivibration mounts made by rubber and steel parts  
**MATERIALS** metal components are zincplated  
 NR/SBR rubber compound  
**SHORE** 55° +/-5°  
**USE** male-male


 *Antivibranti gomma-metallo*  
**MATERIALI** parti metalliche sono zincate  
 Parti in gomma mescola NR/SBR  
**SHORE** 55° +/-5°  
**IMPIEGO** maschio-maschio


Type Tipo	Cod. N°	D	H	G	L	M
<b>AT 10-10</b>	AV002288	10	10	10	8	M4
<b>A2M 12-15</b>	AV002292	12	15	7	10	M4
<b>AT 20-15</b>	AV002296	20	15	18	14	M6
<b>AT 20-19</b>	AV002297	20	19	15	14	M6
<b>AT 20-30</b>	AV002298	20	30	12	12	M6
<b>AT 20-40</b>	AV002299	20	40	12	15	M6
<b>AT2M 25-20</b>	AV002304	25	20	10	18	M6
<b>AT2M 30-20</b>	AV002310	30	20	20	20	M8
<b>AT 30-25</b>	AV002311	30	25	15	23	M8
<b>AT 40-28</b>	AV002318	40	28	28	35	M10

Type Tipo	Cod. N°	D	H	G	L	M
<b>AT2M 40-30</b>	AV002319	40	30	19	20	M8
<b>A2M 40-30-27</b>	AV002320	40	30	27	20	M8
<b>AT 40-48</b>	AV002321	40	48	23	20	M8
<b>AT 46-25</b>	AV002325	46	25	20	40	M10
<b>AT 50-30</b>	AV002330	50	30	33	41	M10
<b>AT 60-60</b>	AV002335	60	60	28	49	M10
<b>AT 75-40</b>	AV002339	75	40	37	54	M12
<b>AT 100-55</b>	AV002344	100	55	43	80	M16
<b>AT 100-75</b>	AV002345	100	75	41	95	M16

Waisted Bobbins: rubber / steel – Type: **BT** / *Antivibrante Sgolato: gomma / metallo* – Tipo: **BT**



 Antivibration mounts made by rubber and steel parts  
**MATERIALS** metal components are zincplated  
 NR/SBR rubber compound  
**SHORE** 55° +/-5°  
**USE** female-male

 *Antivibranti gomma-metallo*  
**MATERIALI** parti metalliche sono zincate  
 Parti in gomma mescola NR/SBR  
**SHORE** 55° +/-5°  
**IMPIEGO** femmina-maschio

Type Tipo	Cod. N°	D	H	G	L	T	M
<b>BT 10-10</b>	AV002402	10	10	10	4	8	M4
<b>BT 15-15</b>	AV002405	15	15	12	5	12	M6
<b>BT 20-15</b>	AV002408	20	15	18	6	14	M6
<b>BT 20-19</b>	AV002409	20	19	10	6	14	M6
<b>BT 25-20</b>	AV002412	25	20	18	6	18	M6
<b>BT 30-20</b>	AV002415	30	20	20	8	25	M8
<b>BT 40-30-M8</b>	AV002417	40	30	23	8	25	M8
<b>BT 40-30-M10</b>	AV002418	40	30	20	10	25	M10
<b>BT 55-45</b>	AV002421	55	45	28	10	46	M10
<b>BT 60-60</b>	AV002424	60	60	28	10	49	M10