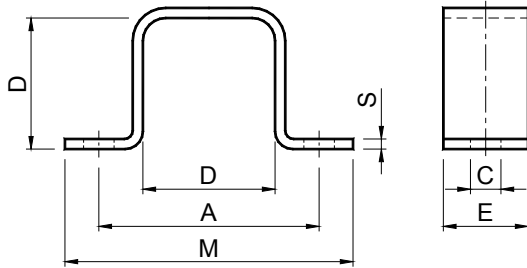


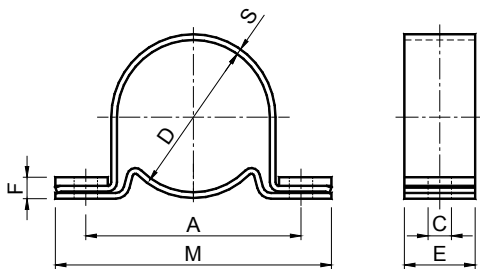



Accessories **VIB** / Accessori **VIB**Type: **SR** / Tipo: **SR**


 **MATERIALS** Clamp is made of steel.
TREATMENTS Clamp is oven-painted.

 **MATERIALI** La staffa è in acciaio.
TRATTAMENTI La staffa è verniciata a forno.

| Type Tipo | Cod. N° | A | ØC | D | E | M | S | Weight Peso in [kg] |
|----------------|----------|-----|----|----|----|-----|-----|---------------------------|
| SR 10 | RE020450 | 37 | 6 | 20 | 20 | 50 | 2,0 | 0,04 |
| SR 20 | RE020451 | 50 | 7 | 27 | 25 | 65 | 2,0 | 0,05 |
| SR 30 | RE020452 | 60 | 9 | 32 | 30 | 80 | 2,5 | 0,11 |
| SR 40 | RE020453 | 80 | 11 | 45 | 35 | 105 | 3,0 | 0,18 |
| SR 50 | RE020454 | 100 | 13 | 60 | 40 | 125 | 4,0 | 0,31 |
| SR 60 | RE020455 | 115 | 13 | 72 | 45 | 145 | 5,0 | 0,49 |
| SR 60 G | RE020458 | 120 | 13 | 75 | 45 | 150 | 5,0 | 0,50 |
| SR 70 | RE020456 | 130 | 18 | 78 | 50 | 170 | 6,0 | 0,71 |
| SR 70 G | RE020459 | 135 | 18 | 80 | 50 | 175 | 6,0 | 0,72 |

Type: **SC** / Tipo: **SC**

 **MATERIALS** Clamp is made of steel.
TREATMENTS Clamp is oven-painted.

 **MATERIALI** La staffa è in acciaio.
TRATTAMENTI La staffa è verniciata a forno.

| Type Tipo | Cod. N° | A | ØC | ØD | E | F | M | S | Weight Peso in [kg] |
|--------------|----------|-----|------|-----|----|----|-----|-----|---------------------------|
| SC 10 | RE020460 | 45 | 6,5 | 28 | 20 | 6 | 60 | 1,5 | 0,05 |
| SC 20 | RE020461 | 55 | 6,5 | 36 | 25 | 7 | 75 | 2,0 | 0,11 |
| SC 30 | RE020462 | 68 | 8,5 | 45 | 30 | 8 | 90 | 2,0 | 0,16 |
| SC 40 | RE020463 | 92 | 10,5 | 62 | 35 | 10 | 125 | 2,5 | 0,31 |
| SC 50 | RE020464 | 115 | 12,5 | 80 | 40 | 11 | 150 | 3,0 | 0,48 |
| SC 60 | RE020465 | 130 | 12,5 | 95 | 45 | 13 | 165 | 3,5 | 0,72 |
| SC 70 | RE020466 | 152 | 16,5 | 108 | 50 | 15 | 195 | 4,0 | 0,96 |

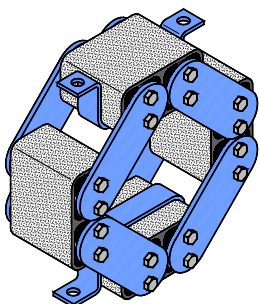


fig. 1

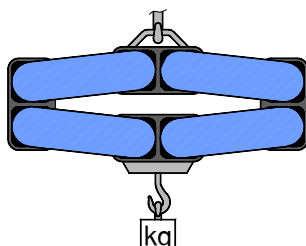




fig. 2

 Application example:
fig. 1 elastic suspension
fig. 2 elastic support for suspended loads

 Esempio di applicazione:
fig. 1 sospensione elastica
fig. 2 supporto elastico per carichi sospesi

Type **AD-P** with clamps
Tipo **AD-P** con staffe