

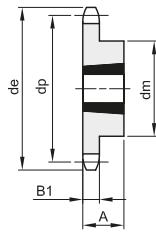
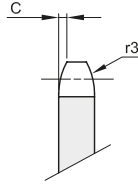


PIGNONI PER BUSSOLA CONICA - DIN 8187 - ISO 606

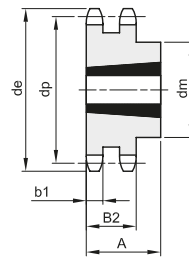
SPROCKETS FOR TAPER BUSHES - DIN 8187 - ISO 606

1/2" x 5/16"
12,7 x 7,75 mm
Rullo 8,51 mm
08B - 1 - 2 - 3

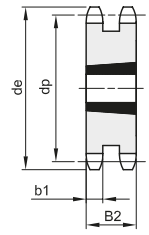
B1	B2	B3	b1	C	r3
7,2	21	34,9	7	1,3	13



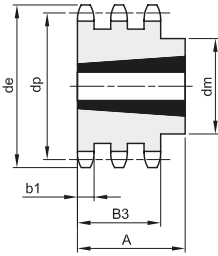
1



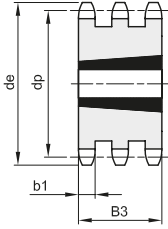
2



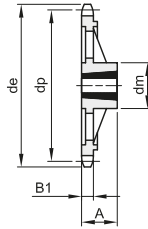
3



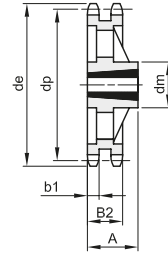
4



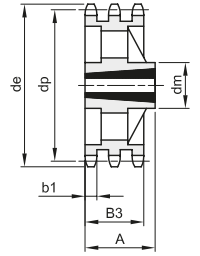
5



6



7



8

Materiale: Acciaio C45 / *Materiale: Ghisa EN-GJL-200

Z	de	dp	semplici					doppi					tripli							
			codice	dm	A	Bussola	Tipo	Kg.	codice	dm	A	Bussola	Tipo	Kg.	codice	dm	A	Bussola	Tipo	Kg.
15	66,5	61,80	381340015	45	22	1008	1	0,16	382340015	46	22	1008	2	0,22	383340015	34,9	1008	5	0,36	
16	69,9	65,10	381340016	50	22	1108	1	0,20	382340016	50	22	1108	2	0,22						
17	74,5	69,11	381340017	60	25	1210	1	0,22	382340017	56	25	1210	2	0,23	383340017	34,9	1210	5	0,35	
18	78,0	73,14	381340018	60	25	1210	1	0,27	382340018	60	25	1210	2	0,30						
19	82,5	77,15	381340019	63	25	1210	1	0,33	382340019	62	25	1210	2	0,38	383340019	62	38	1215	4	0,61
20	86,0	81,19	381340020	67	25	1610	1	0,27	382340020	66	25	1610	2	0,45						
21	90,6	85,21	381340021	71	25	1610	1	0,36	382340021	70	25	1610	2	0,50	383340021	70	38	1615	4	0,65
22	94,1	89,24	381340022	71	25	1610	1	0,36	382340022	76	25	1610	2	0,55						
23	98,7	93,26	381340023	76	25	1610	1	0,50	382340023	79	25	1610	2	0,62	383340023	70	38	1615	4	0,93
24	102,1	97,29	381340024	76	25	1610	1	0,53	382340024	84	32	2012	2	0,68						
25	106,7	101,32	381340025	76	25	1610	1	0,56	382340025	87	32	2012	2	0,72	383340025	34,9	2012	5	0,85	
26	110,2	105,36	381340026	76	25	1610	1	0,60	382340026	87	32	2012	2	0,82						
27	114,8	109,39	381340027	76	25	1610	1	0,63	382340027	87	32	2012	2	0,92	383340027	34,9	2012	5	1,18	
28	118,3	113,42	381340028	90	32	2012	1	0,77	382340028	87	32	2012	2	1,10						
30	126,9	121,49	381340030	90	32	2012	1	0,91	382340030	87	32	2012	2	1,24	383340030	34,9	2012	5	1,73	
38	159,2	153,79	381340038	90	32	2012	1	1,25	382340038	100	32	2012	2	2,50	383340038	34,9	2012	5	3,53	
45	188,6	182,07	381340045	111	32	2012	1	1,68												
57*	237,1	230,54	381340057	111	32	2012	6	2,78	382340057	111	32	2012	7	3,64						
76*	313,9	307,33	381340076	111	32	2012	6	3,81	382340076	111	32	2012	7	5,09						