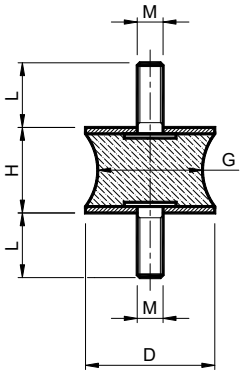


Waisted Bobbins: rubber / stainlesssteel – Type:**ATX** / *Antivibrante Sgolato: gomma / inox – Tipo:ATX*



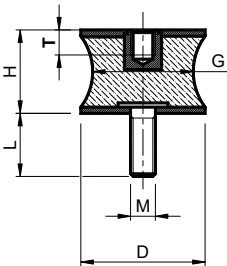
Antivibration mounts made by rubber and steel parts
MATERIALS metal components are in stainless steel
 NR/SBR rubber compound
SHORE 55° +/-5°
USE male-male

Antivibranti gomma-metallo
MATERIALI parti metalliche sono inox
 Parti in gomma mescola NR/SBR
SHORE 55° +/-5°
IMPIEGO maschio-maschio

Type Tipo	Cod. N°	D	H	G	L	M
ATX 10-10	AV002350	10	10	10	8	M4
ATX 20-15	AV002354	20	15	18	14	M6
ATX 20-19	AV002355	20	19	15	14	M6
ATX 20-30	AV002356	20	30	12	12	M6
ATX 20-40	AV002357	20	40	12	15	M6
ATX 25-20	AV002362	25	20	15	18	M6
ATX 30-20	AV002367	30	20	20	25	M8
ATX 30-25	AV002368	30	25	15	23	M8
ATX 40-28	AV002374	40	28	28	35	M10

Type Tipo	Cod. N°	D	H	G	L	M
ATX 40-30	AV002375	40	30	20	25	M8
ATX 40-48	AV002376	40	48	23	20	M8
ATX 46-25	AV002380	46	25	20	40	M10
ATX 50-30	AV002384	50	30	33	41	M10
ATX 60-60	AV002388	60	60	28	49	M10
ATX 75-40	AV002393	75	40	37	54	M12
ATX 100-55	AV002398	100	55	43	80	M16
ATX 100-75	AV002399	100	75	41	95	M16

Waisted Bobbins: rubber / stainlesssteel – Type:**BTX** / *Antivibrante Sgolato: gomma / inox – Tipo:BTX*



Antivibration mounts made by rubber and steel parts
MATERIALS metal components are in stainless steel
 NR/SBR rubber compound
SHORE 55° +/-5°
USE female-male

Antivibranti gomma-metallo
MATERIALI parti metalliche sono inox
 Parti in gomma mescola NR/SBR
SHORE 55° +/-5°
IMPIEGO femmina-maschio

Type Tipo	Cod. N°	D	H	G	L	T	M
BTX 10-10	AV002428	10	10	10	4	8	M4
BTX 15-15	AV002431	15	15	12	5	12	M6
BTX 20-15	AV002435	20	15	18	6	14	M6
BTX 20-19	AV002436	20	19	10	6	14	M6
BTX 25-20	AV002439	25	20	18	6	18	M6
BTX 30-20	AV002442	30	20	20	8	25	M8
BTX 40-30-M8	AV002445	40	30	23	8	25	M8
BTX 40-30-M10	AV002446	40	30	20	10	25	M10
BTX 55-45	AV002449	55	45	28	10	46	M10
BTX 60-60	AV002452	60	60	28	10	49	M10